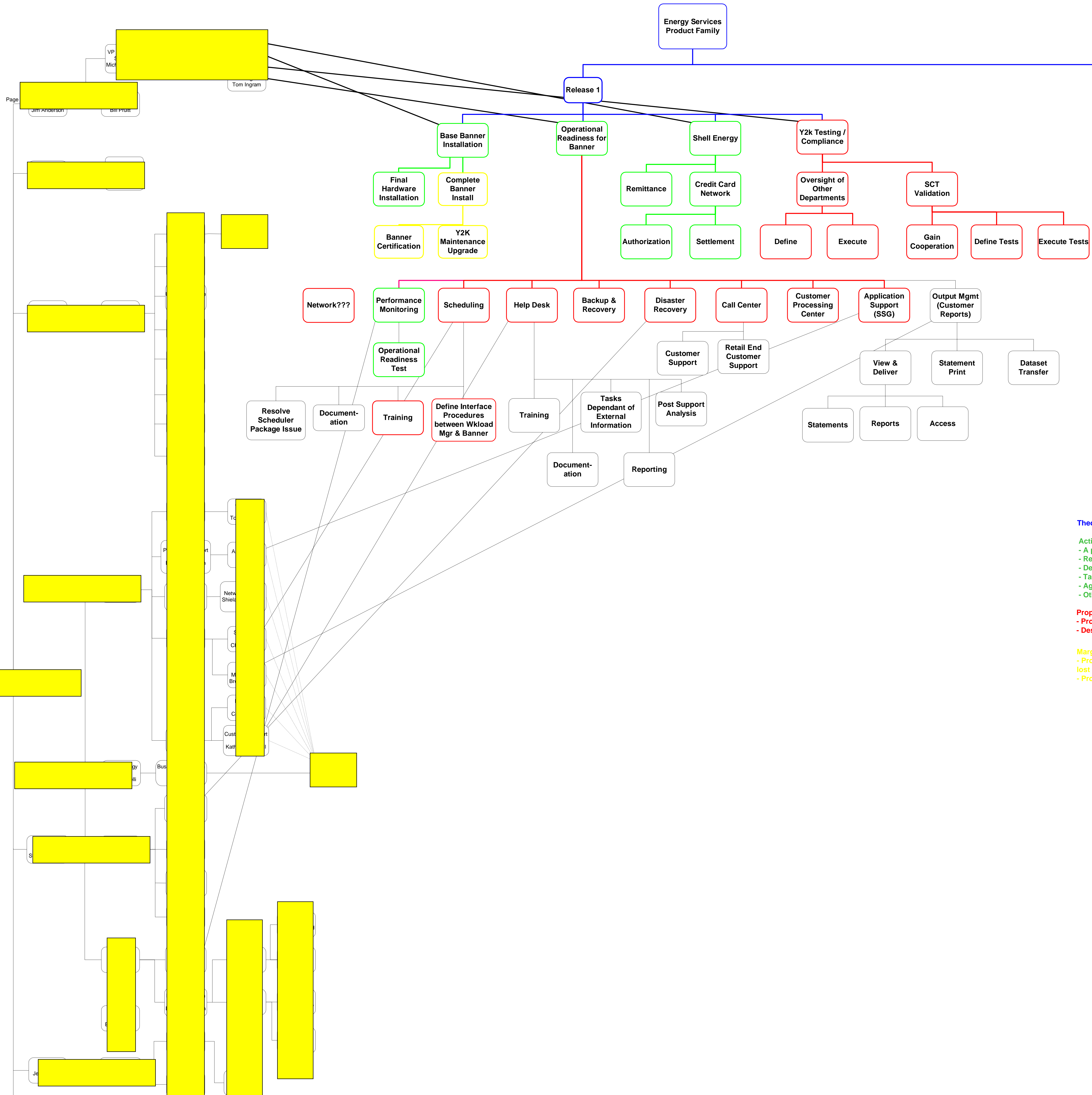


OBS (Organization Breakdown Structure), WBS (Work Breakdown Structure) and Control Accounts



Theoretical Program "Umbrella" (The overall desired product family)

- Active Projects have
- A paying customer or budget
 - Resources assigned
 - Deliverables defined
 - Tasks defined
 - Agreed upon due date
 - Other departments accept responsibility for reporting progress

- Proposed Projects are:
- Prospects / proposals (or)
 - Desired projects that do not yet meet the criteria for "Active"

- Marginally Active Projects are:
- Projects that were Active at one point, but an Active criteria has been lost
 - Projects impeded by a major barrier

